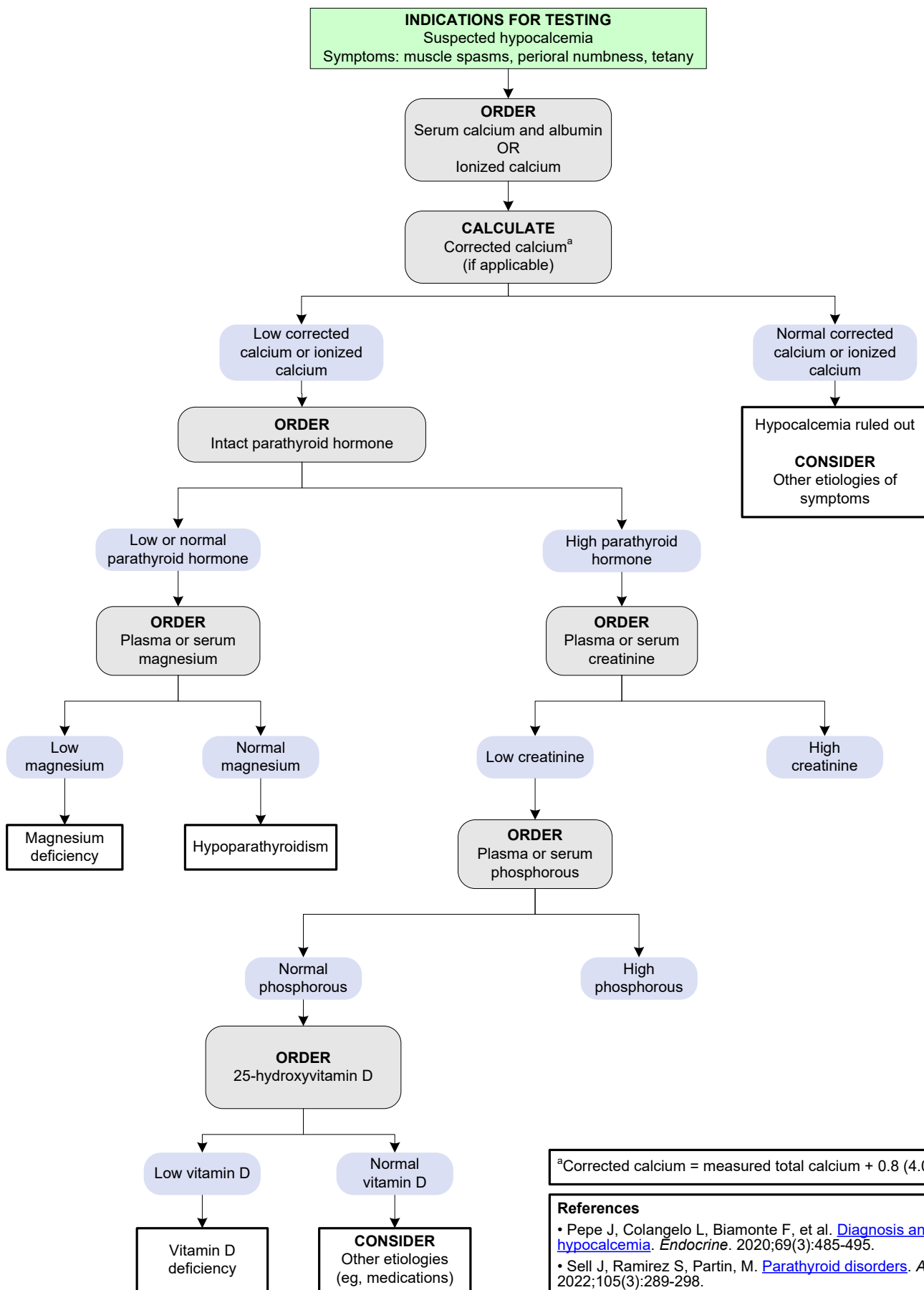


Hypocalcemia Testing

[Click here for topics associated with this algorithm](#)



^aCorrected calcium = measured total calcium + 0.8 (4.0 - serum albumin)

References

- Pepe J, Colangelo L, Biamonte F, et al. [Diagnosis and management of hypocalcemia](#). *Endocrine*. 2020;69(3):485-495.
- Sell J, Ramirez S, Partin, M. [Parathyroid disorders](#). *Am Fam Physician*. 2022;105(3):289-298.